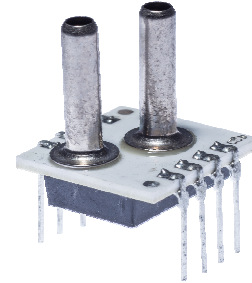


**SPECIAL LOW PRESSURE RANGE DIFFERENTIAL SENSOR
 WITH ANALOGUE OUTPUT(single version)**

This Smartec differential pressure sensor has an amplified analogue output. The sensor is compensated for offset, sensitivity, temperature drift and nonlinearity. The sensor has a range of 50 mm H₂O FS and the output is ratiometric to the power supply voltage. Other pressure ranges on request (0.3 – 100 PSI).



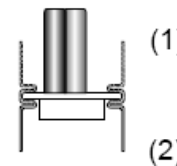
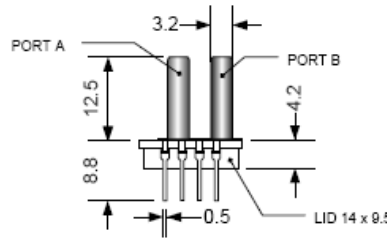
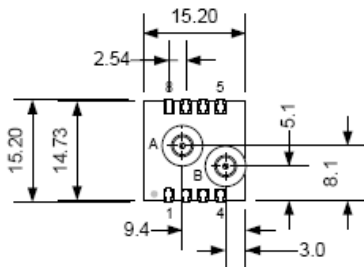
Electrical Characteristics

Performance Characteristic at Vcc =5V excitation @ 25 °C

Parameter	Min	Typ	Max	Units
Supply Voltage	4.75	5.00	5.25	V
Supply Current	-		2.0	mA
Pressure range (fs)			50	mmH ₂ O
Zero Output (Dif)	0.32	0.500	0.68	Vdc
Span Output (Dif)	3.8	4.0	4.2	Vdc
Response time		1	2	ms
Overall accuracy			4.5	%FS
Pressure overload			3X	rating
Temp compensation	0		50	°C
Operating Temp range	-10		70	°C
Storage temperature	-40		125	°C

It is advised to place a 100nF capacitor between Vcc and Gnd
 Wetted materials are: Pyrex glass, RTV, Ceramic, Nickel and Silicon
 The output is ratiometric to Vcc

Dimension



NOTE:
 1. Port A is used for positive differential
 2. Port A is not used for absolute
 3. Port B is not used for gage
 4. All dimension in mm

Use of N.C. pins will cause malfunction
 Connect between Vss and Vdd a capacitor of 100 nF

Pin	Description
1	NC
2	Gnd
3	Out
4	Vcc
5 - 8	NC